



THE TELLURIDE

4 Bedrooms • 2.5 Bathrooms • 3 Car Garage
3,429 Total Sq.Ft. • 2,368 Finished Sq.Ft

This spacious 2 story home features details that make it the perfect home for all. As you approach the covered front porch you feel right at home. Walking in, the entry opens into a large living and dining area which makes it a great room for entertaining.

The kitchen comes complete with corner pantry, spacious island and stainless steel appliances, flowing spaces and resilient finishes makes this kitchen impervious to the daily wear of any active family. The Telluride offers an oversized 2 car garage with work space/storage and option for 3rd car.

Escape upstairs to the master retreat that features two walk-in closets along with a Roman soaking tub and skylight for gazing at the stars. Enjoy the ease of a raised vanity with lavish granite counter tops and square sinks.

Colorado inspired architecture carefully blended with amenities that are surprisingly standard, makes the Telluride a Rocky Mountain Escape!



THE TELLURIDE

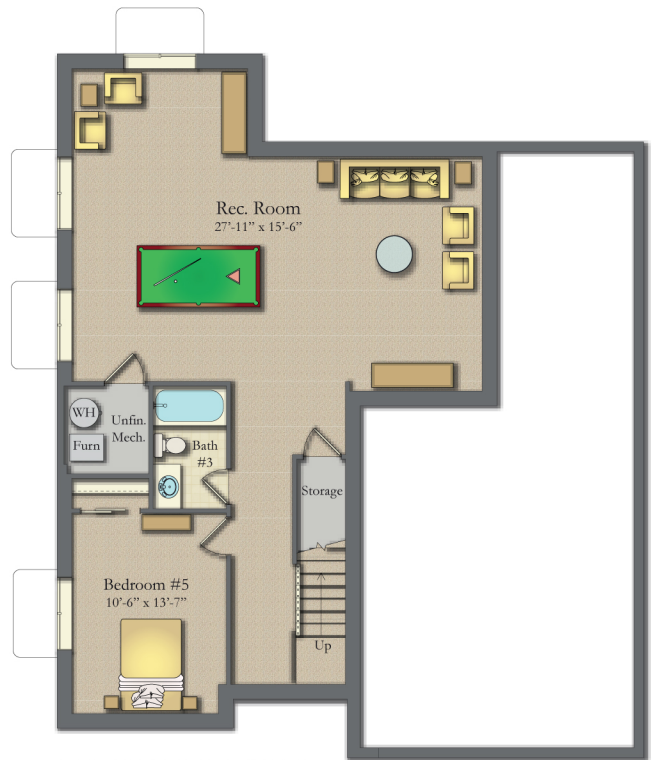
4 Bedrooms • 2.5 Bathrooms • 3 Car Garage
 3,429 Total Sq.Ft. • 2,368 Finished Sq.Ft



MAIN LEVEL
 1,010 SQ.FT.



UPPER LEVEL
 1,358 SQ.FT.



BASEMENT LEVEL
 1,061 SQ.FT. FINISHED